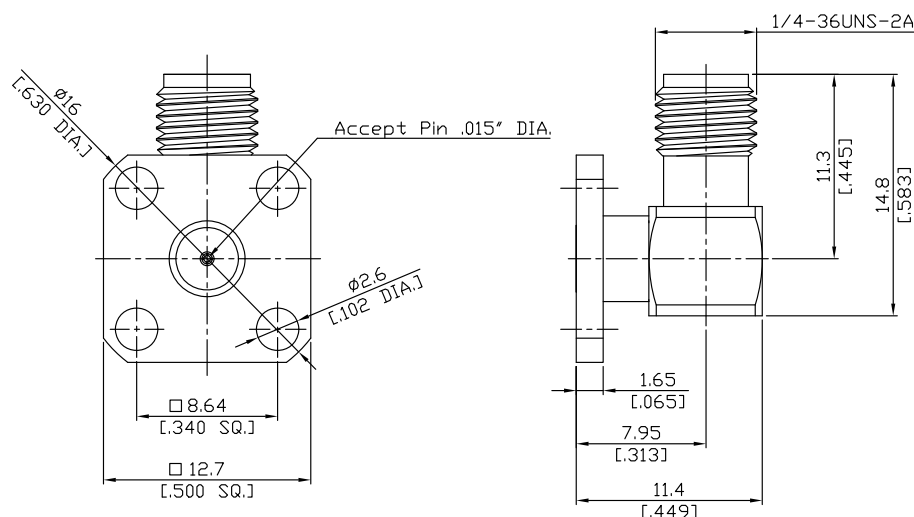
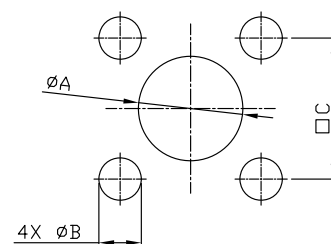


SMA Jack (Female) Right Angle 4-Hole Field Replaceable Jack
Accepts .015 Pin, DC-18 GHz

SMA2BF59-0015A / 9Q



Mounting Dimension



	mm		inch	
	Max.	Min.	Max.	Min.
A	4.3	4.2	.169	.165
B	2.7	2.6	.106	.102
C	8.69	8.59	.342	.338

All dimensions are in mm [inch]

Tolerances according to DIN ISO 2768-mH

Interface

According to

IEC 60169-15; CECC 22110; MIL-PRF-39012 SMA; MIL-STD-348/310

Electrical Data

Impedance	50 Ω
Frequency	DC to 18 GHz
VSWR (Return Loss)	≤ 1.2 (≥ 20.83 dB)
Insertion Loss	≤ 0.05x √F (GHz) dB
Insulation Resistance	≥ 5 GΩ
Center Contact Resistance	≤ 3.0 mΩ
Outer Contact Resistance	≤ 2.0 mΩ
Test Voltage	1000 V rms
Working voltage	480 V rms
Power handling	≤ 200 W @ 2 GHz

Material And Plating

Piece Parts	Material	Plating
Centre contact	Beryllium Copper	Gold plating (Non-magnetic nickel-phosphorus underplating)
Body	Stainless Steel	Gold plating (Non-magnetic nickel-phosphorus underplating)
Insulator	PTFE	

SMA Jack (Female) Right Angle 4-Hole Field Replaceable Jack
Accepts .015 Pin, DC-18 GHz

SMA2BF59-0015A / 9Q

Mechanical Data

Coupling mechanisms	Screw-lock
Mating Cycles	≥ 500
Captivated Type	Mechanical
Center Contact Captivation: axial	≥ 27 N
Coupling Test Torque	1.70 Nm
Recommended Torque	0.80 Nm to 1.1 Nm

Environmental Data

Temperature Range	-65°C to +165°C
Thermal shock	MIL-STD-202, Meth. 107, Cond. B
Corrosion	MIL-STD-202, Meth. 101, Cond. B
Vibration	MIL-STD-202, Meth. 204, Cond. D
Shock	MIL-STD-202, Meth. 213, Cond. I
Moisture Resistance	MIL-STD-202, Meth. 106
RoHS	compliant

Packing

Single or 100